



## A CONNECTIVE PLACE

We named our project A Connective place because people could connect there. We would like to create a platform, where the elderly can meet younger people and spend some time together. They can learn different skills from each other, do some stuff together, for example cooking, playing chess, reading books etc. We would like to connect generations together, make a multigenerational dialog. We think that intergeneration sharing is very useful and benefiting to both sides but easily neglected nowadays. Our place offers a space for that intergenerational meetings.

## 1.part: needs of birds

### What kind of birds can we observe in Ljubljana urban area?

In the urban area of Ljubljana 161 species of birds have been recorded in years 2009–2011. 104 species were recorded during the breeding season and 97 during the winter. (source: Tome D, Vrezec A, Bordjan D: Ptice Ljubljane in okolice / Birds of Ljubljana and its environs, Ljubljana, 2013). They belong to several different groups like ducks, swans and geese, storks and herons, birds of prey, waders, owls, woodpeckers, passerines ... and some other. These are birds which breed or winter in different types of habitats, like the city center, industrial and shopping areas, urban and suburban settlements, cultural landscape, forests, urban parks, rivers and other water bodies.

### Are there any endangered species of birds in Ljubljana urban area? (or anyhow special, specific, unique)

Peregrine falcon (*Falco peregrinus*) (city center and other urbanized areas; charismatic; the fastest animal in the planet; it occurs mainly outside breeding season and it preys on pigeons and sometimes crows)

Little ringed plover (*Charadrius dubius*) (pits, gravelly construction sites and possibly flat roofs covered with gravels; endangered due to loss of natural riverine gravel sites, breeds in alternative habitats in urban areas)

Woodcock (*Scolopax rusticola*) (Tivoli & Rožnik forest during migration; endangered internationally due to loss of breeding habitat and intensive hunting)

Scops owl (*Otus scops*) (suburban areas with orchards and old trees; endangered due to loss of breeding sites - old trees with cavities, and decline of big insects which are their main food)

Kingfisher (*Alcedo atthis*) (river banks, water bodies; endangered due to regulations of rivers and loss of sandy river banks)

Black woodpecker (*Dryocopus martius*) (Tivoli & Rožnik forest; charismatic as our biggest woodpecker; difficult to see but easy to hear; needs old trees for nesting and foraging; provides natural nesting holes for secondary hole-nesters like tits, nuthatches, starlings, sparrows ...)

Jackdaw (*Corvus monedula*) (Buildings; endangered because people close the niches in the buildings)

...

If so, how can we improve their situation or environment - as a society? (dos and don'ts, restrictions, new laws,...)

Do not use pesticides  
Do not use fertilizers on meadows  
Do not change meadows into fields  
Do not cut down hedgerows  
Do not cut down old trees  
Do not fill the holes in the tree trunks  
Do not make river regulations, keep river banks as natural as possible  
Do not remove aquatic vegetation and vegetation on the banks of water bodies  
Do not close the niches in the buildings  
Do not remove the nests of the house martins from the walls of the buildings

- as a designers/architects? (design specifics, things to avoid, materials to use,...)

Make nest-boxes and other types of nesting objects

Make niches in the buildings

Use nature-based solutions to manage rivers, streams and other water bodies

Find a professional arborist to take care of old trees and keep them alive as long as possible

Leave dying / falling trees if they do not pose a direct threat to people

Use less glass and reflecting surfaces on buildings to prevent bird collisions

Use markers on reflecting surfaces to mitigate bird collisions

Is there a specie/species in Ljubljana urban area which is posing a threat to a ecosystem in any way?

No, there is no such species of bird in the area.

## 2. Needs of people who protect birds

What kind of work/activities do the DOPPS experts/volunteers do in urban areas? (observation, education events,...)

Excursions in the Tivoli park, education in schools, fair stands, setting up and taking care of nest-boxes, educational public talks about urban birds ...

What are current plans of development of your organization ?/What kind of projects are you currently planning to realize?

We are a big organization and have several projects in preparation which are hard to describe in short.

## AN INTERVIEW WITH A STAKEHOLDER

### Urša Koce, ornitologist

Urša Koce is an ornitologist and a member of DOOPS - an NGO which is focused on preserving and studying life of birds in Slovenia and on educating wider public about it.

I divided interview into two parts. Since DOPPS is the organization which brings together two different species - birds and people - I wanted to ask the questions from two different perspectives:

1. Needs of birds
2. Needs of people who protect birds.

Where are you now? How coronavirus pandemy affected your work?

This year I was supposed to be based in Amsterdam for whole year and then every once in a while going to Prague, but now I am here in Ljubljana and I am doing all my projects from here. I also do a lot of exhibitions and now many of them were cancelled and I am figuring out how to do some of them online and some of them will be postponed.

Was this some special year in abroad?

I am mostly exhibiting abroad, also in Ljubljana but you know, Ljubljana is small. And this was the first year that I decided to do residencies, so from last september I did one in Amsterdam, one in Berlin. It was also because I got very good offers - the scientists invited me and offered me to work with laboratories that work with soil and microorganisms that I work with.

Is your work somehow connected to the place and its context where it is exhibited?

It is always important to me if there is some possibility to create a specific context for the work - to add or remove something. But I don't do really site-specific things, it was never my practice. What I really enjoy, if the people and also galleries understand what the work is about and they bring also other people, other artworks or scientists, they can tell another stories so these layers can tell more and more about that subject. So in this way, I like the context as wide as possible.

If you imagine the ideal exhibition space for you, how it should look like?

My dream is to do an exhibition in a forest. Usually when I make a new work, I want it to be shown in many places so thats why my works are mostly inside. But maybe I will do that soon.

Can you imagine to exhibit also in public urban space?

Yeah, I think every my project can be everywhere basically. It is just about to think about it how to put it outside. But then there are some safety issues, some of my works need a lot of attention, galleries have to take care of living organisms and I am asking them "But are you ready to have pets? Are you ready to tak care of them?" so it is a lot of practicalities. But that is why this work is fun.

With which people you collaborate? You are an artist interested in science, are they as scientists or technicians interested in art?

They have to be open. They have to be intrigued and be ready for very weird questions. Because they follow a particular logic and my logic is completely different. But some scientists are actually persuading other scientists to take artists to their labs because we generate questions for their own research. So it is good for everyone.

How do you look at situation about exhibition spaces in Ljubljana? Is there enough of them? Do you have enough opportunities to exhibit here?

For me it is ok to have one or two exhibitions per yaer in Ljubljana. I also have some partners here and then it is also exhibited in their space. But I am still mostly exhibiting abroad. There is a lot of artists here who need to exhibit so we have each our turn couple of times a year.

Can you imagine working on some project with non-profesionals? For example children from some school or local community?

I never tried. I don't know what the methodology would be. Maybe if there would be some facilitator leading us through this thing, because it is a skill how to handle the community or children. I think it can be an interesting process. Yeah, maybe some day I'll try.

Do you do some workshops or other interactions with general public?

Yes, I did already workshops, especially in the beginning of projects I used that format. Lately I gave up on that format because I had too much work. But ofcourse, workshops are always nice to do because I can teach people on what I made so it is nice thing to share.

Why I am asking is that in our workshop with Trajna and Prostoroz we work on one place in Bežigrad and we are thinking about some temporary use. Would you be possibly interested in using it for your purposes - some workshop or other?

Yes, I would be interested. But it depends on a schedule.

And when you are doing workshops, how they look like?

I like to teach people something and I like that they get something they can take home. So usually we make little devices. For example one of my first workshops was on basis like a little music box but with mushrooms inside. And you could play by puting electrodes on the mushrooms and getting different sounds.

My last question is a bit up to you. Do you have some ideas you would like to share but people never ask you?

Maybe that a lot of times people look at my work, they're not quite sure what they are looking at - if it is something that is true or real or not real and somehow they always get somehow lost. That is sort of this speculative realism, it's like science fiction machines that I make so people would think about what kind of situation we are in. It's a bit twisting the story. So this is what I do.

Note: Interview was done by videocall and shortened.  
Interviewer: Barbora Vřborovř

## AN INTERVIEW WITH A STAKEHOLDER

### Saša Spačal, artist

*"My artistic research focuses on entanglements of environment-culture continuum and planetary metabolism. By developing technological interfaces and relations with an organic and mineral soil agents I try to address the posthuman condition that involves mechanical, digital and organic logic within bio-politics and necro-politics of our times."*

Saša Spačal is a postmedia artist working at the intersection of living systems research, contemporary and sound art. Her work focuses primarily on the posthuman condition, where human beings exist and act as one of many elements in the ecosystem and not as sovereigns. Therefore abandoning the Cartesian system of classification and accepting the fact that the field of technology has expanded not only from hardware to software but also to wetware resulting in hybrid phenomena inscribed in mechanical, digital and organic logic.

Is it safe to keep the bees in the area with other activities?

Usually. If you don't get in their flight path (maybe 2 meters in front of the hives), they will leave people alone. Of course those who are allergic need to be more careful.

How much of space do you need for taking care about bees at least?

Hard to say. You can keep a hive on a balcony, but they need space in front of the hive - a few meters. If there are neighbors, you don't want them too close to the border and you need to get their permission.

Do you need any facilities/background for bee-keeping? (f.e. storage for equipment or something else)

You'll need to have some extra equipment, and somewhere to store it. Could be a shed. or an apartment. but hard to carry if you don't have a car.

How often do you attend the place where the bees are held?

I go around once a week from now to September. In winter I don't go at all.

Are you (or group of you with the same interest) able to organise some workshop or event for public? Or have some regularly meetings for people which are interested in?

I don't have much time this year.

Is there in Ljubljana some group or association of beekeepers?

There are two in Ljubljana. Urban beekeepers, run by Gorazd (who was copied in the earlier emails) urbanicebelar.si. Also, cd-ljubljanacenter.si

## AN INTERVIEW WITH A STAKEHOLDER

### William Blomstedt beekeeper

William Blomstedt is a geographer, beekeeper and writer. Born in Washington, USA. In 2010 he came to Slovenia to study. Now, he is married and lives in Slovenia. He worked with Trajna.

He was asked as a beekeeper. We wanted to find out if it is possible to have beehives on a place in the Bežigrad, if is the beekeeping safe and what is needed for beekeeping.

The result is that everything is possible, we would have and observe bees and it's quite safe.

### 1. I found you are working at the Events Department, can you please explain to me what does that involves

The Museum of Architecture and Design (MAO) is a public programme based institution and in its core is bringing – the specific topics and materials we research and archive – closer to the expert audience as well as the general public. The public events format enables immediate evaluation of the presented work, feedback through public discussions and gatherings with like-minded audience as well as direct popularisation of certain content or topics. The Event Department implements the different projects that involve content developing, programming, production and organization of events with the help of external creative and administration collaborators and technical staff.

### 2. If I am not mistaken, you are also a member of the platform Future architecture. Can you briefly explain to me what is this project about?

MAO is the Coordinating entity of the Future Architecture Platform which consists of 26 high profile cultural institutions throughout Europe creating an infrastructure for promotion of ideas of an emerging generation of creatives – for the future of architecture and living environment – through public events. The cross-disciplinary emerging creatives applying to our annual Call for Ideas are published on our website and granted the opportunity to be selected and involved in the Future Architecture programme – implemented by the member institutions – consist of exhibitions, conferences, workshops, performances, prototyping, lectures, editorial work and publishing. (<http://futurearchitectureplatform.org/>)

### 3. What kind of events do you organize? Vernissages, crafts workshops, competitions..?

The main activities of MAO are archiving exceptional achievements in Slovenian architecture and design, both past and present. The format of exhibitions is the most common because it offers direct communication of the certain topic/material with the public but also, the process of preparation enables categorization of the valuable material, creates the museum's collection and later, makes the archive accessible. All exhibitions are with supporting activities such as opening events, conferences with interested parties on the specific topic that the exhibition showcases, publishing the exhibition both printed and online, and merch for the museum's shop.

Besides this, important projects that position MAO – but also Ljubljana and Slovenia in general – as an established international cultural player in the field of architecture and design are BIO (Ljubljana Biennial of Design), CzK (Center for Creativity) and Future Architecture platform. These projects are based on international collaboration and creative exchange through activities of different formats and scales, all with a critical approach to the status quo.

### 4. Are you also leading the workshops?

Sometimes we host, mostly we develop and produce content.

### 5. I saw that MAO is providing some workshops for kids. Where are the workshops happening and what do they offer?

The Education Department of MAO is creating a programme for kids entitled MiniMAO. The activities are carefully selected to provoke motoric and cognitive skills but also to establish a creative mindset for further personal development. The entire programme uses a set of tools which are based on MAO's collection and archival material. They often conduct field trips and live architecture experiences such as exploration of the medieval castle in which MAO is located as well as the neighboring socialist housing settlement Fužine.

### 6. How many people are attending these workshops?

Mini MAO workshops are well attended and are part of the slovenian curriculum. Different programmes are designed for different amounts which can range from 10 – 60 kids.

### 7. Are any of workshops or events happening outside, or better said out of the MAO areal?

MAO outsources event spaces only if the expected audience and/or people engaged in the planned programme are exceeding the museum's capacity i.e more than 200 individuals with their needs at the same time at the same place. Another case is when the planned programme requires different locations for better outcomes or co-hosting events with partner institutions.

### 8. Is there anything you are missing in your current museum's building while providing your job? For example an extra room, more storage place, anything.

More accessible storage space for the collection and the archive on public display, more exhibitions space for permanent shows. We are lucky that the castle has a big courtyard in which most of the spring-summer-autumn events are happening. The winters are a totally different story.

### 9. Now A little bit a science-fiction question ahead. If you imagine an ideal place to create an event of this kind (workshop), how would it look like?

Utility Box (as a storage and sanitary element) with all the equipment (all tools, furniture, multimedia and production material) and infrastructure (electricity, water, sewage) easily accessible and on a distinctive location, next to a vast blank space with the potentials for multifunctions, adaptation to different needs and arrangements (semi paved, semi opened and can host prolonged activities, day and night, for up to 50 people in working mode and 100 in event mode). Furthermore, the venue should be formalized and offer support and utilize collaboration, mostly in terms of human power but also in programming.

### 10. The last but not the least question. The plot is a bit further away from the museum building, would you consider it as a disadvantage for an eventual collaboration?

The remote location is not a problem especially because the creative offer in Ljubljana is limited to the city centre, praises for the initiative covering this aspect as well. If the criteria from the answer 8. are nearly met, sure there will be many interested for collaboration, not only MAO.

## AN INTERVIEW WITH A STAKEHOLDER

### Milan Dinevski (Museum of Architecture and Design)

The Museum of Architecture and Design is a national Slovene museum for architecture, industrial design, graphic design, visual communication and photography.

MAO introduces the past work of architects, designers, and photographers as useful experiences, knowledge, and ideas for a better future. It systematically collects, stores and studies materials related to these fields of activity and displays them in temporary and permanent exhibitions, making it possible for visitors to understand the past and the future of architecture, design and photography.

MAO offers visitors a diverse experience with modern, attractive exhibitions, presentations and programmes with content for people from different backgrounds and all ages. Through various educational events museum is establishing itself as an innovative space for creating, gathering, exchange and learning.

MAO is the organiser of the world's oldest biennial of design BIO, coordinator of the first pan European architectural platform Future Architecture and heads the Centre for Creativity Slovenia. More at [www.mao.si](http://www.mao.si)

## Interview for the retired locals

Hi!

We are students of architecture and participants of the workshop organised by ProstoRož and Trajna. Together, we are trying to get alive the place of "Bežigrad Craters", located near Dunajska cesta and Topniška ulica in Bežigrad. There is an opportunity to turn it into some interesting and attractive place for you. You are potential users for us. If you could help us with a short questionnaire, we can design there something special for you. Thank you for your time!

### 1. What do you usually do during the day?

- a) Spending time inside (TV, books...).
- b) I do my hobbies (art/sport/crafts...).
- c) I go outside with my friends.
- d) Another option. (write)

### 2. How much time do you usually spend outside?

- a) Just my way to the grocery store.
- b) More than 2 hours.
- c) Less than 2 hours.

### 3. If you are spending some time outside with your friends, what do you do?

Write an answer.

### 4. Do you have any favourite meeting place for hanging out?

Write an answer.

### 5. Do you ever have some activities for seniors happening outside?

- a) Yes.
- b) No.
- c) I don't know.

### 6. If you are living in the retirement home, does it provide any workshops for you? If yes, which?

Write an answer.

### 7. Do you know the place where the "Bežigrad craters" are?

- a) No.
- b) Yes, I know it from...

### 8. Are you doing some crafting activities with your grandchildren?

- a) Yes.
- b) No.

### 9. Could you imagine collaboration with a children or students on some projects, workshops, crafts, etc.?

- a) Yes.
- b) No.
- c) I don't know.

### 10. What activities are you skilled at enough to pass the knowledge to the youngsters?

Write the numbers from pic. 2

### 11. What do you think you can learn from the younger generation?

Write an answer.



Pic. 2. The activities

## LOCAL USERS SURVEY (CONCEPT)

### Group targeted

Throughout history, one of the essentials of education was passing knowledge of the older generation to the younger. Together with practical knowledge also important know-how and tradition were passed on as well. This phenomenon is dying out in today's society. Especially in cities, there are less possibilities for intergeneration dialog than in the countryside. The younger generation in cities is missing on this intergeneration dialog, which in the past was a source of valuable know-how, life philosophy, and well-meant advice.

Our proposal is offering an opportunity for this kind of dialog. The elderly in a city are often living alone, therefore this could be a possibility to meet new people, to spend time in a community and to share their knowledge and skills.

Among younger generations (especially young adults) there is a new wave of interest in tradition, craft, cooking, ... and there is also an enormous amount of information about it on the internet. What is missing is these past experiences, know-how and life advice that can't be passed from the internet.

Our proposal could be beneficial not just for target groups, but also for other generations as this kind of interactive space could generate other activities and events - group babysitting, community cooking, etc.

## Interview for the students and schoolars

Hi!

We are students of architecture and participants of the workshop organised by ProstoRož and Trajna. Together, we are trying to get alive the place of "Bežigrad Craters", located near Dunajska cesta and Topniška ulica in Bežigrad. There is an opportunity to turn it into some interesting and attractive place for you. You are potential users for us. If you could help us with a short questionnaire, we can design there something special for you. Don't worry about a long boring questions, it won't be more than 5 minutes and we hope it will be fun for you.

:) Thank you for your time!

### 1. What do you usually do after school?

- a) Spending time inside (studying, taking a nap, computer games, TV..).
- b) I do my hobbies (art/sport...).
- c) I go outside with my friends.
- d) Another option. (write)

### 2. How much time do you usually spend outside?

- a) Just my way from school to home.
- b) More than 2 hours.
- c) Less than 2 hours.

### 3. If you are spending some time outside with your friends, what do you do?

Write an answer.

### 4. Do you have any favourite meeting place for hanging out?

Write an answer.

### 5. Do you ever have some school activities happening outside?

- a) Yes.
- b) No.
- c) I don't know.

### 6. Does your school do any workshops for you regarding the environment or nature? If yes, what?

Write an answer.

### 7. What activities would you prefer to do outside? Choose numbers.

Write the numbers from pic. 1.

### 8. Do you know the place where the "Bežigrad craters" are?

- a) No.
- b) Yes, I know it from...

### 9. Are you doing some crafting activities with your grandparents?

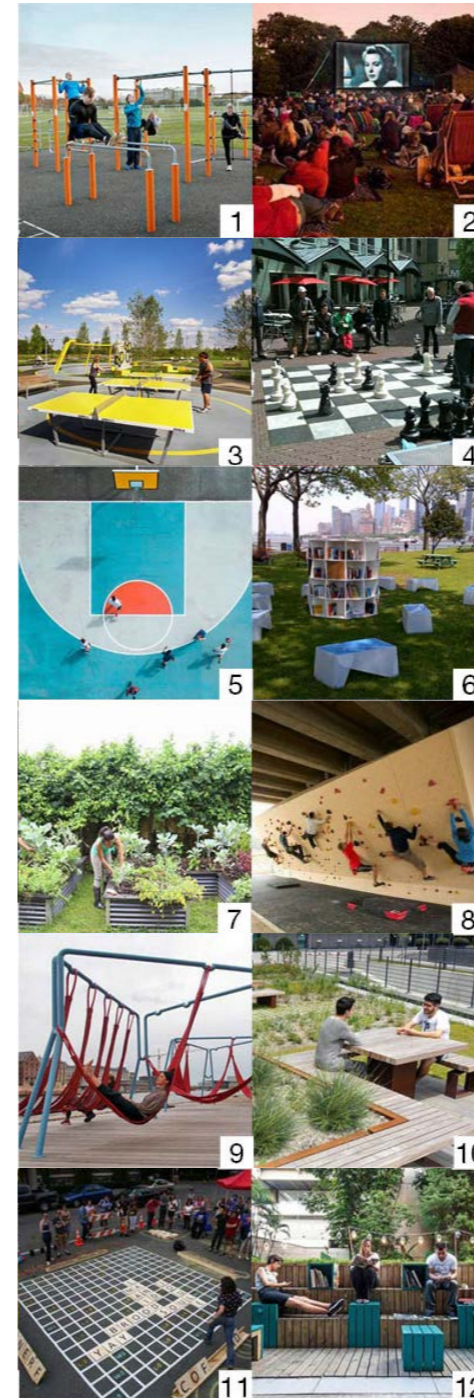
- a) Yes.
- b) No.

### 10. Could you imagine collaboration with a retired people on some projects, workshops, crafts, etc.?

- a) Yes.
- b) No.
- c) I don't know.

### 11. What do you think you can learn from the older generation?

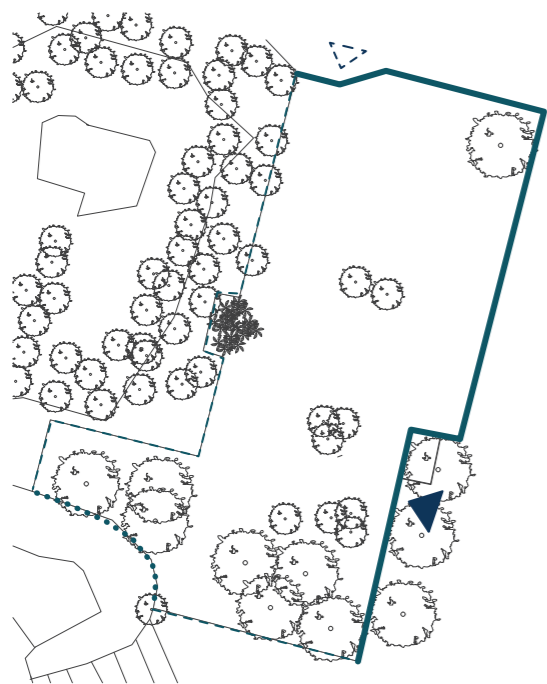
Write an answer.



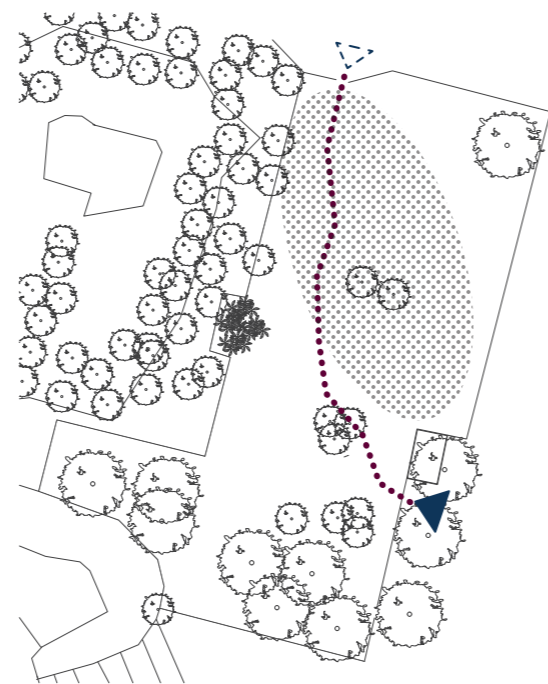
Pic. 1. The activities

## interview

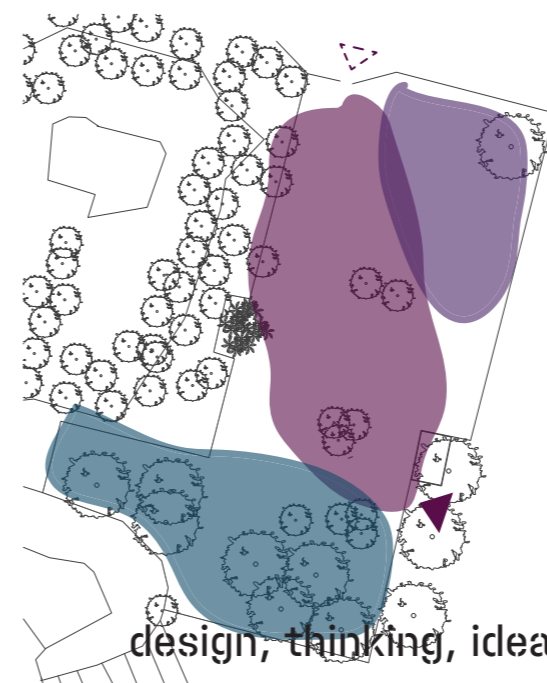
Because targeted people are very diverse, we decided to split the interviews in two. One will be for the students and schoolars, the other for local retired people. create neutral pictures illustrating offered activities. The point of the research would be finding out what activities are most popular to start with, and how many people would have interest and if is this collaboration even meaningful in the first place.



borders



path and car access



design, thinking, ideas, iterations

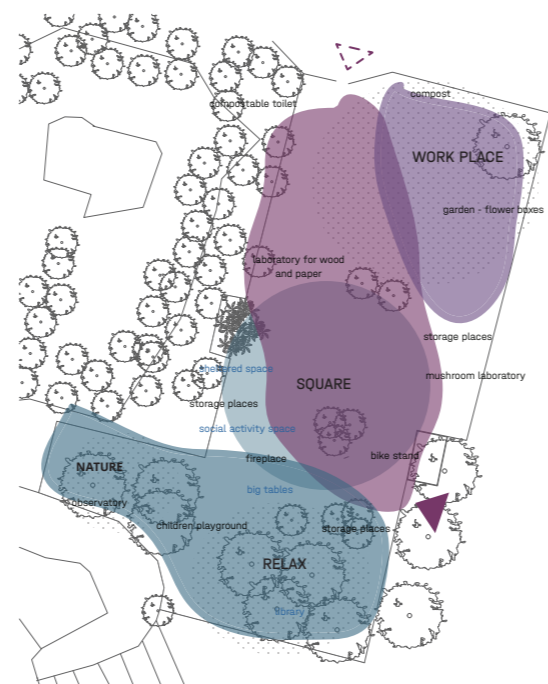
zones

## THE PROCESS

### design, thinking, ideas, iterations



needs



suggestions

### WHAT DO WE NEED?

- outdoor kitchen
- bike stand
- compostable toilet
- sitting (chairs, hamaka,..)
- storage spaces
- mushroom laboratory
- laboratory for wood and paper
- garden - flower boxes
- compost
- fireplace
- observatory
- water collectors and reservoirs
- children playground

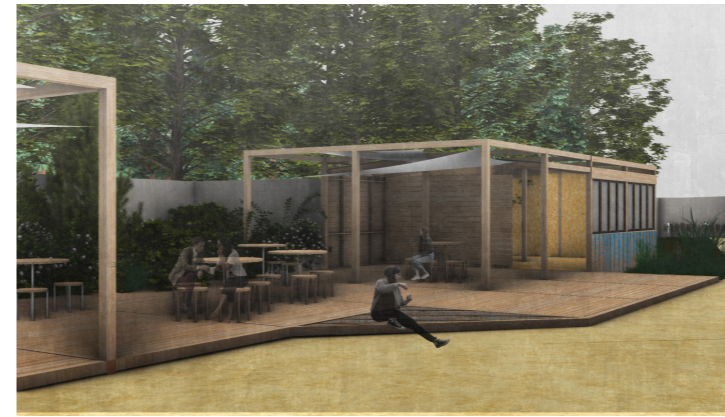
- sheltered space
- big tables
- social activity space (big chess)
- library

Firstly, we started to make an analysis of the whole surroundings of Bežigrad district and to sum up the SWOT of our site.

Secondly, we divided the site into 3 parts, in which we placed the needs and suggestions of Tranja's and Prostorož's clients, and potential users.

Our main idea was to create a common space - square, where people could gather and make new contacts and friendships. The workplace, which will serve as a place for gardening and a relaxing area.





## THE OUTCOME

The place has to respond to a variety of events and users. Some of the user requests were even contradicting each other. To create a functional space able to respond to this wide range of conditions we decided to divide the place into zones. Every zone is a little bit different and it is defined by the amount of public or private feel. The whole place has given semi-public status but we differentiate the place its self into zones using terms as private or public. The zones has no rigid boundaries so they are slightly blending with each other. The boundaries are just suggested with greenery, buildings orientation and openings in the fence.

The main "public space" of the area is creating a informal square. All the public parts of the buildings are opening towards it. Other spaces are shaded or open according to its function.



## simbiocen

We created a simple building for workshop with outdoor platform. The building can open toward the platform and therefore to the square or it can be closed and serve for private events.

## other stakeholders

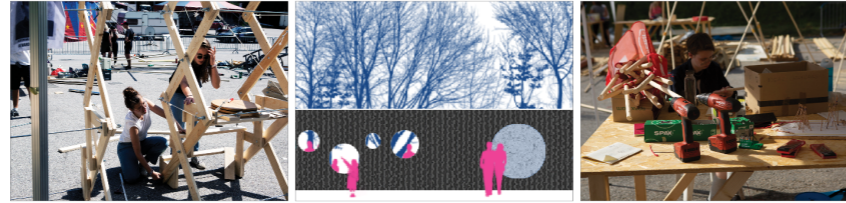
For other users we created spaces according their needs. The mushroom lab, the gardening area, kitchen with possibility to pen to outdoor space, observatory shaded from the main area, relax area with hammocks,.. Local residence are considered as potential users. They can get in touch with the place by the openings and notice boards in a fence when they walk by. Some of them can connect with a place by participating in building the place or by joining the events.

## PHASES

week 1

### 1. PREPARATORY PHASE

- purchase of material
- preparation of place: cut the greenery, prepare the material for use, prepare electricity, place the composting toilet, create a new entrance, build the secondary fence
- get people interested: make openings in the fence



week 2

### 2. ACTIVATING PHASE

- build first modular object - the workshop place with water reservoirs
- promote sitting, building and fence workshops in community
- make the place friendlier: hang hammocks, place bike stands



week 3-5

### 3. COMMUNITY PHASE

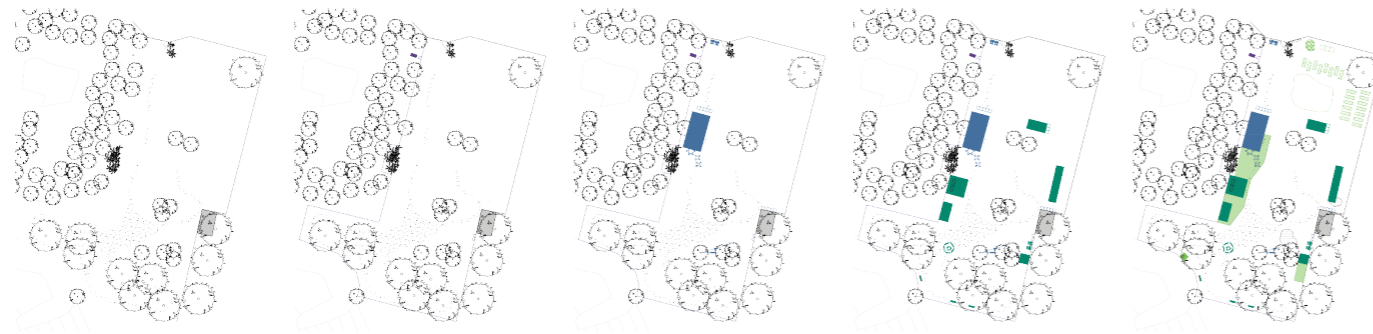
- sitting workshop: create benches and chairs, preferably from local materials
- create a fireplace for gathering the community
- building workshop: continue building other objects with community, builders of the first object as tutors: kitchen, warehouses, mushroom lab
- fence workshop: painting, planting ivys



week 6-10

### 4. FINAL TOUCHES PHASE

- platform connecting the workshop place with the kitchen and one of warehouses
- platform for the relax area
- gardens, observatory
- surfaces
- more water reservoirs
- start mushroom, paper and wood workshops, cultural events

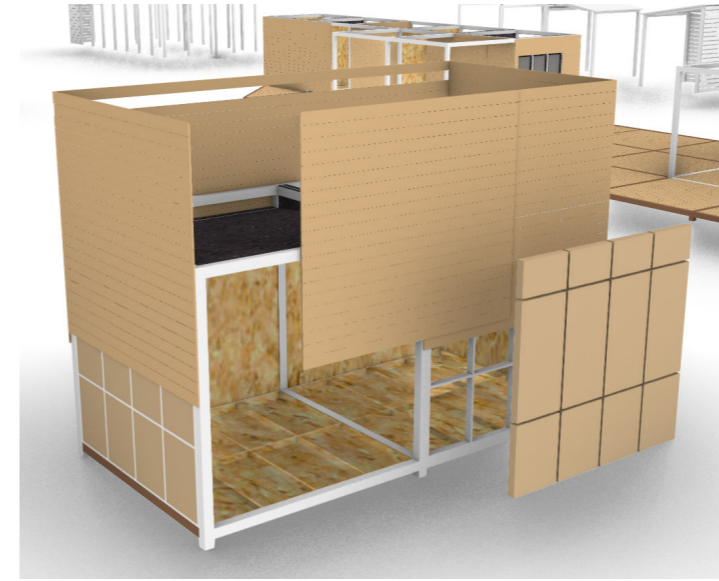


## MOBILITY

- after end of project at one place, moduls can be easily moved to another place



## MATERIALS



## THE OUTCOME

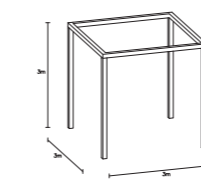
### place making

In order to bring the space into the minds of local people as place we implemented two ideas.

First idea is the new function of the place, the meeting point of older and younger generation. A place where they meet and exchange knowledge and know-how which can generate other events in the future.

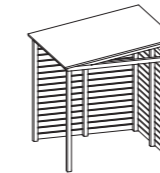
The formal connection to the local community is done mainly by our proposition for the surrounding fence. Since the fence has to stay for safety and protection we suggest to make a live boundary out of it using various openings, mural art, notice boards and wall greenery.

ITEM 1



variation 1	width x depth x height	eur/m <sup>2</sup> / ks	price
siberian larch (8ks)	0,12 x 0,12 x 3 m (8ks)	34,4 / ks	275,2
stain for wood	8x1,47m <sup>2</sup>	4,8 / l	56,4
ground screw U-shape	4ks	18,4 / ks	73,6
construction elements		guess	35
(screws, supplies...)			
<b>total</b>			<b>438,2 eur</b>

ITEM 2



variation 2	width x depth x height	eur/m <sup>2</sup> / ks	price
siberian larch (spruce)	0,12 x 0,12 x 3 m (12ks)	34,4 (16) / ks	412,8 (192)
stain for wood	12x1,47m <sup>2</sup>	4,8 / l	84,7
ground screw U-shape	4ks	18,4 / ks	73,6
construction elements		guess	150
(screws, supplies...)			
simple construction of roof	9m <sup>2</sup>	12 / m <sup>2</sup>	108
sandwich wall	36m <sup>2</sup>	10 / m <sup>2</sup>	360
slat sheet on roof	9m <sup>2</sup>	7,2 / m <sup>2</sup>	64,8
construction of floor	9m <sup>2</sup>	12 / m <sup>2</sup>	108
wooden door	1ks	40 / ks	40
wooden windows	2x2m (1ks)	80 / ks	80
<b>total</b>			<b>1481,9</b>